



YC135

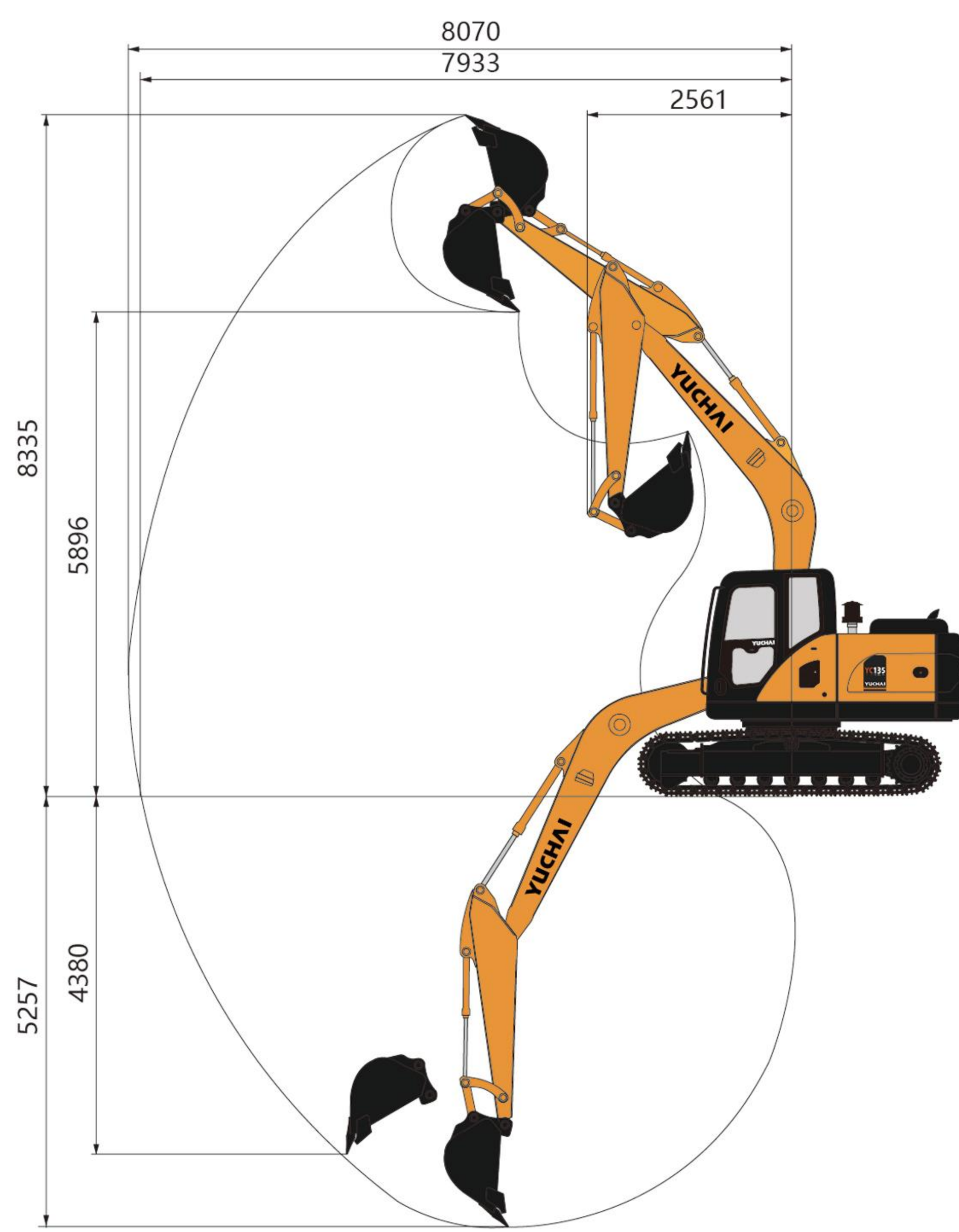
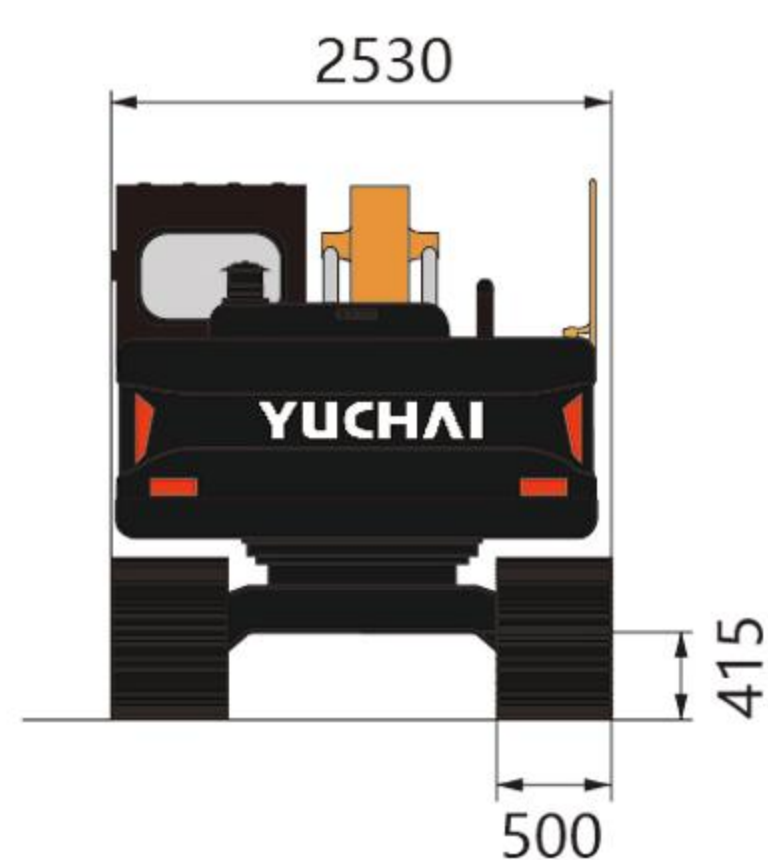
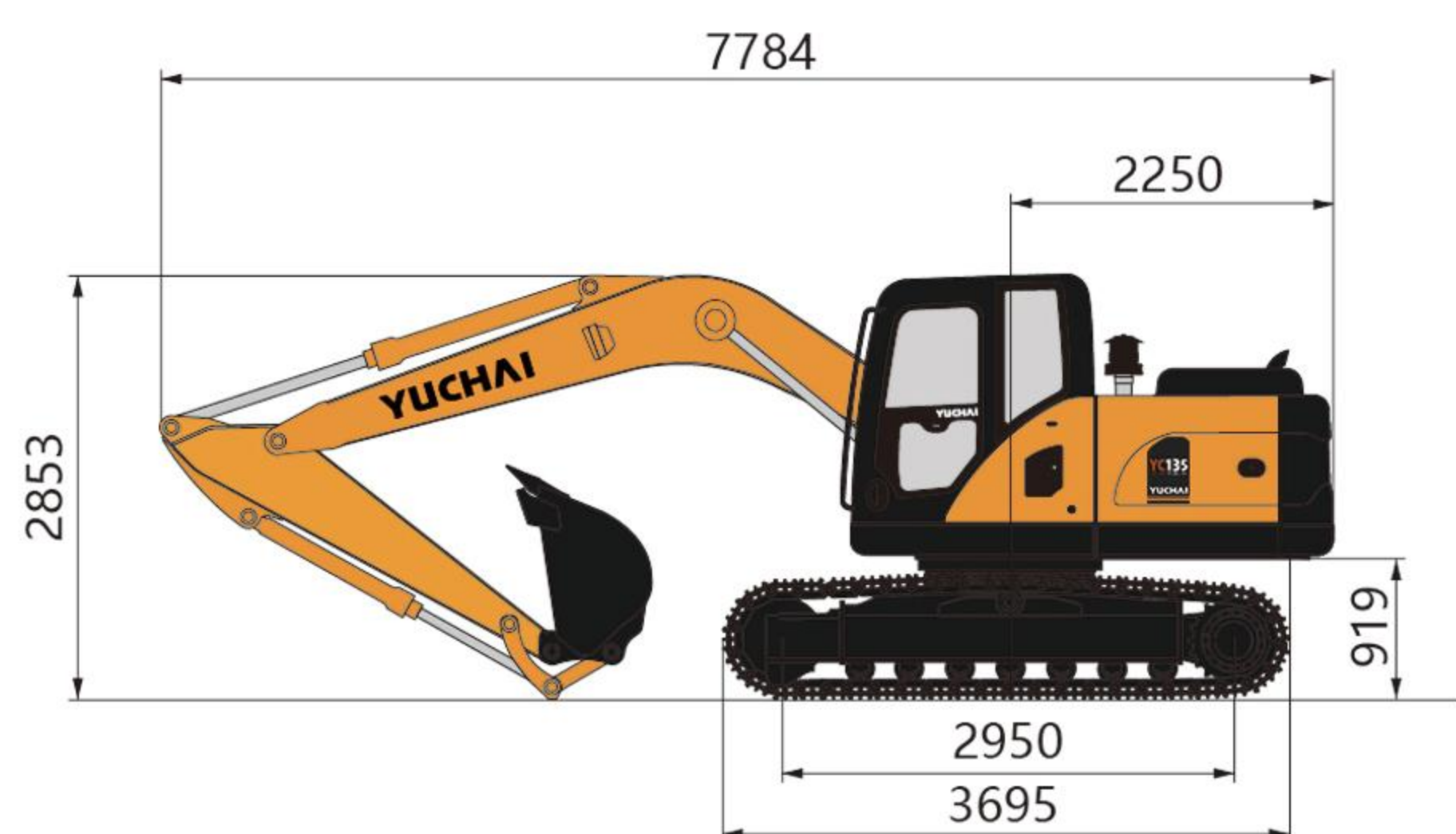
CE

Machine Weight: 13600 kg

Bucket capacity: 0.52~0.62 m³

Engine power: 92/2200 kW/rpm

- Fuel saving and high efficiency
- Large fuel tank of 270 liters
- With one button start function
- Steel casting have been used for the stress part of the working device
- Brand New large cabin
- Comfortable driving experience
- Easy maintenance



► Technical Specification

Basic parameter

| | | |
|-----------------|--------------------------------|----------------|
| Machine weight | 13800/14740 (with dozer blade) | kg |
| Bucket capacity | 0.52 | m ³ |
| Width of bucket | 934 | mm |

Performance parameter

| | |
|------------------------------|----------------|
| Engine model | YUCHAI |
| Engine power | 86/2200 kW/rpm |
| Max. Gradeability | 35 ° |
| Max. digging force of arm | 175.8 kN |
| Max. digging force of bucket | 106 kN |
| Traveling speed | 3/5 km/h |
| Max. hauling force | 121 KN |
| Slewing speed of platform | 11 rpm |

Operating parameter

| | |
|-------------------------------------|---------|
| Max. digging height | 8335 mm |
| Max. digging depth | 5257 mm |
| Max. digging radius | 8070 mm |
| Max. digging radius on ground level | 7933 mm |
| Max. dumping height | 5896 mm |
| Min. slewing radius | 2965 mm |
| Max. vertical digging depth | 5822 mm |

Transportation dimension

| | |
|----------------|---------|
| Overall length | 7784 mm |
| Overall width | 2600 mm |
| Overall height | 2853 mm |

Other Parameter

| | |
|---|---------------|
| Width of undercarriage | 2600 mm |
| Length of track | 3695 mm |
| Width of track | 500/600 mm |
| Height between undercarriage and ground | 415 mm |
| Height between platform and ground | 919 mm |
| Platform tail turning radius | 2315 mm |
| Length to center of rollers | 2950 mm |
| Fuel tank capacity | 270 L |
| Hydraulic oil tank capacity | 105 L |
| Track gauge | 2950 mm |
| Working Pressure | 34.3 Mpa |
| Arm length | 2250 mm |
| Boom length | 4600 mm |
| Flow rate | 2x132.7 L/Min |

Guangxi Yuchai Heavy Industry Co.,Ltd.
 Address:Yuchai Engineering Machinery Industry Center,Luchuan,China
 Tel: +86-775-3223503
 Fax:+86-775-3223503
 Email: dig@yuchai.cn, ychi-export@yuchai.cn
 Website:www.yuchaicm.com

Specifications are subject to change without prior notice